

## Have a perfect command of SAP while reducing costs and allocated time...

SAP authorizations in the hands of the profession but managed by the IT department in complete security



### Automatic management of authorizations (provisioning) according to organizational movements in connection with the HR IS



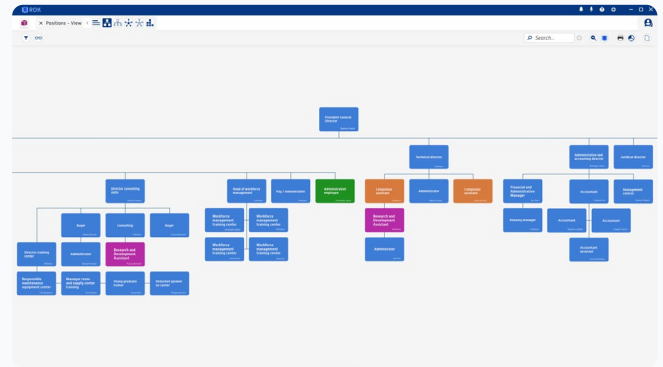
Automatically create / Modify / Derive roles



Creation / Modification / Deletion of users



Assignments / Unassignments of composite roles to users



### SoD Controls Monitoring Capabilities



Real-time SoD analysis at the simple, derivative, composite role level and at the user level (integrates with the HR IS)



Management and execution of compensatory controls via workflows



Can be completed with the risk module



### Management of SAP licenses in accordance with organizational movements IS HR

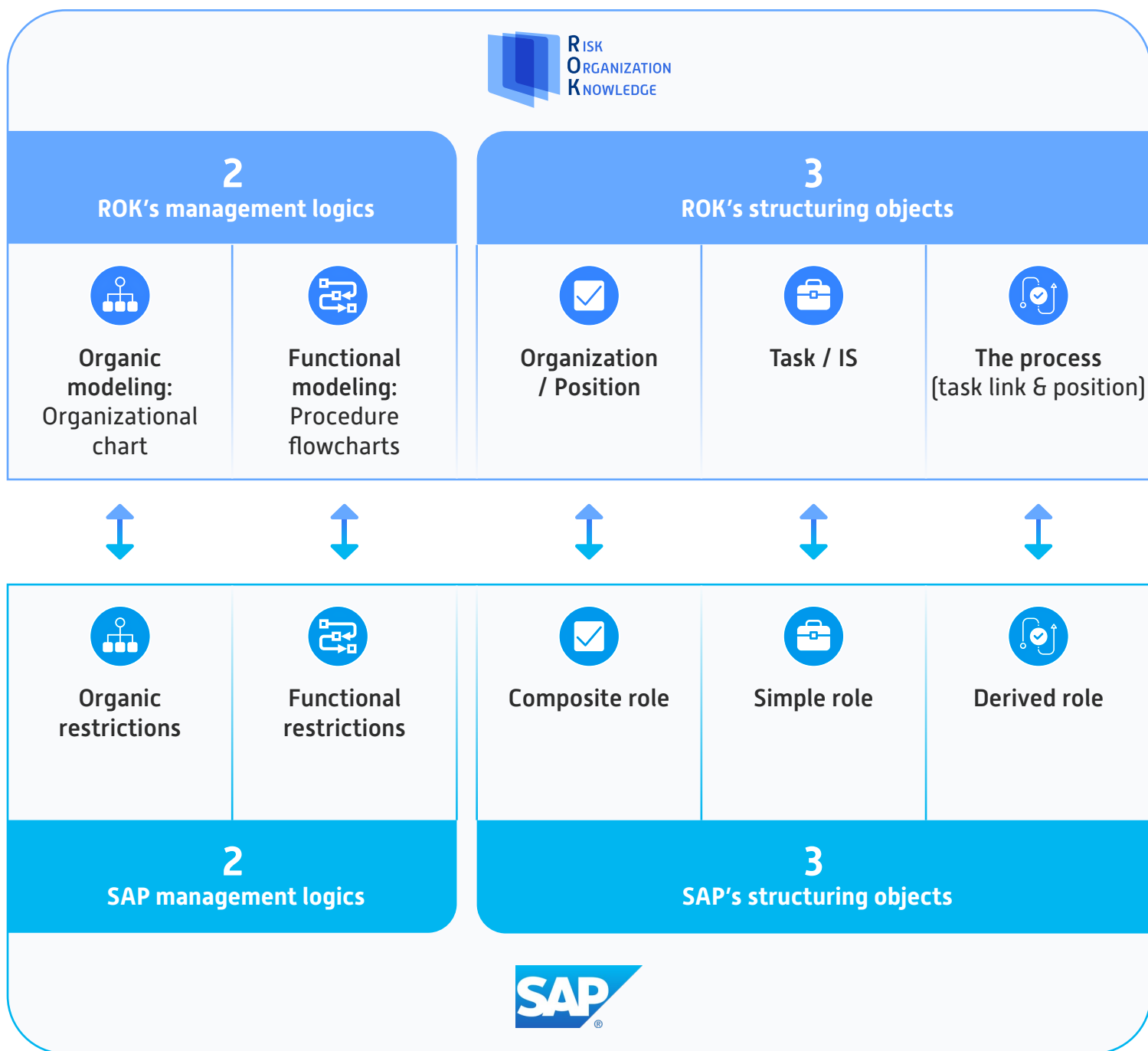


Manage your SAP licenses as accurately as possible in real time



Reassure audit licenses

... thanks to a ROK architecture, a reflection of the SAP logic



### A model structured around an organic and systemic approach

- ▶ Any change in the organization is an automatic modification of SAP rights [composite roles and derived roles]
- ▶ Any functional change is an automatic modification of SAP rights [Simple roles and derived roles]