

ROK: DEFINITELY AI, RESOLUTELY HUMAN

With this new build, ROK continues its mission: combining the best of technological innovation with the richness of human capital.

ROK now connects to thousands of applications via the MCP (Model Context Protocol) and lets you choose the AI best suited to your needs, in complete security. The result: you create and interconnect faster, with more freedom and without complexity.

On the HR side, the employee profile has been redesigned and now includes a “Job history” tab in a timeline format to precisely track career paths, mobility, and key actions. The Web organizational chart becomes customizable (filters, depth, views) for more effective management of the organization.

Finally, at the end of the newsletter you will find the latest videos and articles providing additional insights into these developments.

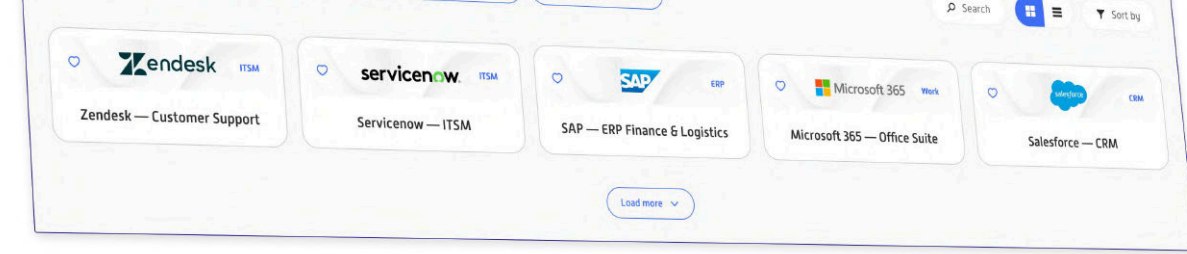
Enjoy your reading!

ROK CONNECTS TO THOUSANDS OF APPLICATIONS THANKS TO THE MCP PROTOCOL

A universal protocol that offers ROK massive, fast, and effortless interoperability.

ROK already allowed you to create SOAP and REST connectors in No-Code, supported by an AI assistant. The benefit was clear: connectors generated faster, with less effort, in a 100% No-Code approach.

With the integration of the MCP (Model Context Protocol), ROK takes a new step forward. This open standard now provides access to more than 20,000 referenced applications, without the need to model connectors, even in No-Code. Interoperability becomes immediate, massive, and effortless.



What changes:

- ✓ A universal, simple, and scalable protocol.
- ✓ Access to thousands of connectors that significantly accelerate and expand integrations.
- ✓ Zero modeling, zero maintenance: fast activation, no heavy updates.
- ✓ The obsolescence of connector libraries offered by traditional workflow vendors: their automation tools no longer offer any competitive advantage compared to ROK.

In summary:

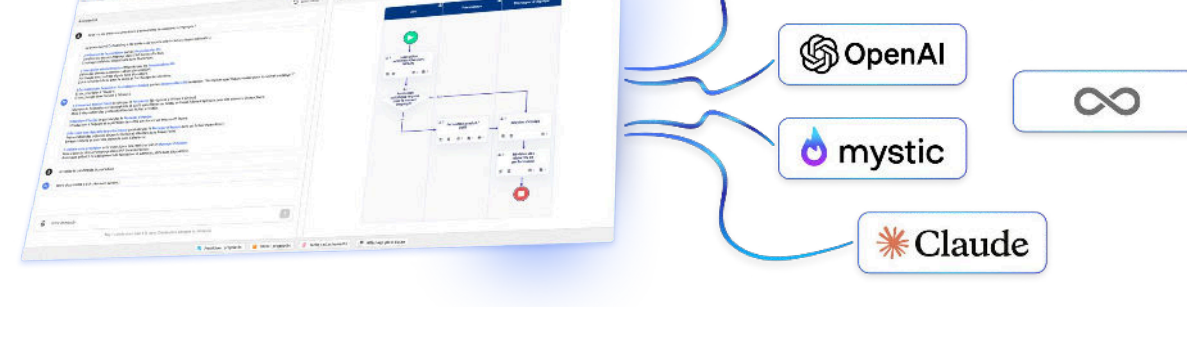
ROK moves from a model where connectors were created in No-Code, accelerated by AI, or, with competitors, via limited proprietary libraries, to a world where tens of thousands of integrations are available immediately.

This is a revolution in interoperability that puts ROK ahead of the race and paves the way for unlimited hyper-automation.

THE AI OF YOUR CHOICE, SERVING YOUR BUSINESS APPLICATIONS

In its previous versions, ROK had already integrated AI assistants to speed up the creation of No-Code applications, while protecting your data through an exogenous AI.

Today, ROK takes a new step forward: you can choose the AI that suits you best. OpenAI, Mistral, Mystic, Claude... so many models available, to be activated according to your needs, always in complete security.



Why it matters:

- ✓ The freedom to select the AI best suited to your organization.
- ✓ An AI tailored to your use cases (Mistral for administrative French, OpenAI for creativity, Claude for long document analysis...).
- ✓ Strengthened control over data confidentiality and sovereignty.
- ✓ More precise results, better aligned with your business practices.

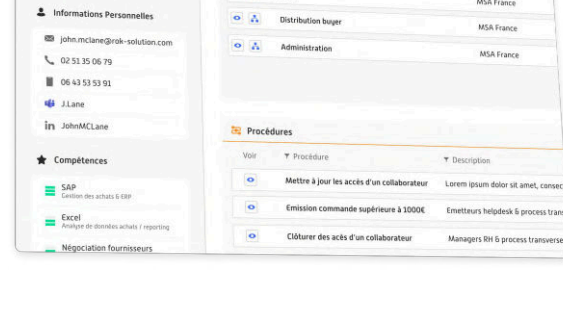
Whichever AI you choose, it will remain external to guarantee the security of your information system. With ROK, AI becomes your co-pilot: you express your needs, ROK turns them into concrete applications.

A REDESIGNED EMPLOYEE PROFILE: A COMPLETE AND LIVING CAREER PATH

The new employee profile offers a clear, ergonomic, and always up-to-date view. More readable and enriched, it now highlights an interactive career path that follows each employee over time.

At a glance, you can access:

- ✓ Positions held (company, site, department).
- ✓ Procedures and workflows in which they are involved.
- ✓ Software and document bases used.
- ✓ Contact information (Teams, email, address, phone...).
- ✓ Skills and interests.



New: the “Job history” tab

A unique timeline display on the market that traces:

- ✓ Successive positions and internal mobility.
- ✓ Contractual and salary changes.
- ✓ Associated procedures, tasks, and resources.

Each step is timestamped, contextualized, and secured according to the HR scope (site, BU, management). A tool that becomes:

- ✓ Real-time employee monitoring.
- ✓ A reliable basis for HR interviews and analyses.
- ✓ A lever to anticipate mobility and risks.

In summary, a strong competitive advantage, as no other HRIS offers such depth in employee career tracking.

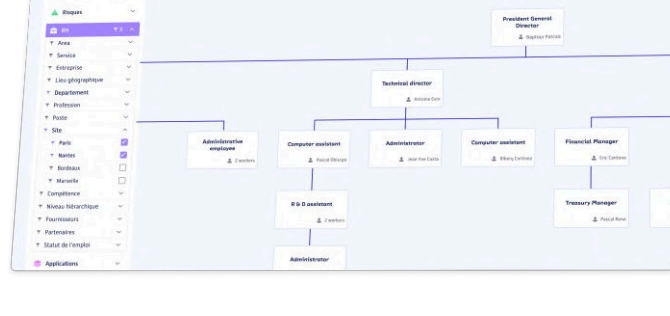
CUSTOMIZABLE WEB HR ORGANIZATIONAL CHART: FILTERS, DEPTH, DYNAMIC VIEWS

Take control of your organization: see clearly, act quickly, manage better.

The Web HR organizational chart was already present in ROK. What’s new? You can now customize it according to your needs with new filters and display options.

Concretely, you can:

- ✓ Filter by scope: direct, transversal, hierarchical relationships.
- ✓ Adjust display depth (N+1, N-1...).
- ✓ Easily navigate hierarchical links with an interactive view.
- ✓ Apply contextual filters (site, department, division...).



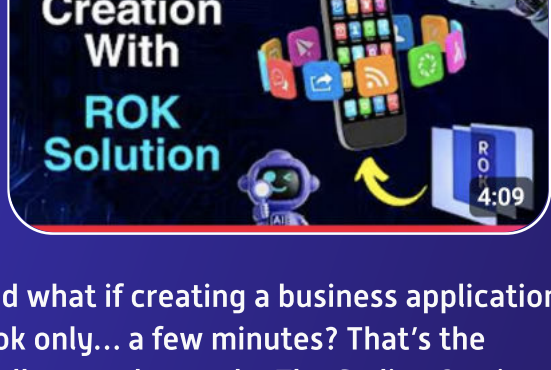
A tool serving everyone: HR, managers, and executives now have a powerful tool to manage the organization, plan changes, and anticipate needs.

Connected to your HR and IT systems, the organizational chart becomes a true operational lever: it powers your daily workflows (access, absences, mobility), strengthens your IAM/IGA governance, and can be activated in less than a day.

THEY TALK ABOUT US

New video by The Coding Bus

“A CLEAR, UNFILTERED DEMO SHOWING HOW ROK TURNS A BRIEF INTO A FUNCTIONAL APP”



And what if creating a business application took only... a few minutes? That’s the challenge taken up by The Coding Bus in a 4-minute video testing our AI in real conditions.

- ✓ Application generation by AI.
- ✓ Modeling of intelligent workflows.
- ✓ Dynamic role assignment (IAM / IGA).
- ✓ BOAT orchestration (Business Orchestration & Automation Technologies).

[Watch the video on YouTube](#)

New media feature

“RPA, BPM, GENERATIVE AI AND NO-CODE INTEGRATION: TOWARDS A UNIFIED ARCHITECTURE”



Hyper-automation now combines several levers for a faster, more agile, and more secure company:

- ✓ RPA to automate repetitive tasks.
- ✓ BPM & workflows to orchestrate processes.
- ✓ Generative AI to accelerate creation.
- ✓ No-Code to empower business teams.
- ✓ Role-based access management to ensure security.

[Read the full article](#)

ROK INTERVIEWS

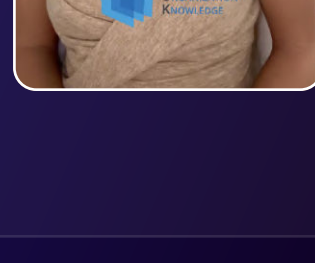
New video series: The ROK interviews

“A SERIES OF SHORT VIDEOS TO UNDERSTAND HYPER-AUTOMATION AND THE COMPANY AS A LIVING ORGANISM, TOLD BY THOSE WHO BUILD IT.”

What if we rethought the company not as a patchwork of tools, but as a living organism?

In this interview series, discover how ROK unifies BPM, RPA, IGA, and Generative AI in a single platform to automate, govern, and secure.

- ✓ Why automation projects fail.
- ✓ The company as a living organism.
- ✓ The organizational chart that becomes dynamic.
- ✓ Generative AI + No-Code = business accelerator.



[See the playlist on YouTube](#)